

Victor Harbor Railway Plaza

Updated: 4 September 2020



ARTIST'S ILLUSTRATION

Montage is for illustrative purposes only.



Introduction

In 2008, Council completed the Victor Harbor - Railway Precinct plan, offering a vision and strategic planning direction for the town centre's Railway Precinct area. Incorporating the creation of McLaren Lane in 2012 and the Railway Turntable site revitalisation in 2018, the Railway Plaza project is the next stage to be constructed.

In early 2019, landscape architecture consultancy, *Oxigen*, completed a comprehensive consultation phase with immediately affected property owners, relevant Council Committees, the general public and key stakeholders on the Railway Terrace Stormwater and Urban Design Project. Based on this feedback, concept plans were prepared.

In June 2020, Council received financial support from the State Government's Places for People grant to complete the project.

The redevelopment and creation of a Railway Plaza will showcase Victor Harbor's heritage listed buildings and Moreton Bay fig trees within a vibrant, high-use and accessible community space that can be transformed to host major festivals and events alongside Warland Reserve.

Underpinning the revitalised streetscape that builds on the area's heritage and culture, is the Water Sensitive Urban Design engineering initiatives that support stormwater reticulation, underground water storage tanks, water filtering and reuse methods. Railway Plaza is also designed to transition seamlessly from the adjoining Mainstreet Precinct Upgrades.



General Information

What is the start and finish date?

Works on the creation of the Railway Plaza will start in early September 2020 and be completed by February 2021.

Who is the civil contractor delivering the project?

SGP Civil is the successful civil contractor to deliver the Railway Plaza project.

SGP Civil have a strong emphasis on minimising disruption through adaptive staging which sends the important message that the Precinct is open for business and accessible during the works period.

Council will use a diverse range of methods and materials to share information about the upgrade to the community and promote the key message that it is 'open for business' in the area.

Some of the methods include the use of direct emails, SMS, fence banners, signage, website, Facebook, message boards, brochures, posters, and print advertising in the local paper.

What support will traders receive during the construction phase?

To help minimise the disruption to businesses, Council intends to provide the following support:

- Pre-construction upgrade information and communications, along with a Business Continuity booklet.
- Assist traders in promoting the Precinct to be 'open for business', supported by maps, advertising and signage.
- Ensure public access to businesses is maintained.
- Regular updates and communication with traders and property owners/occupiers.

How will deliveries be made during the upgrade?

During the construction phase, deliveries to businesses located on Railway Terrace will need to be arranged via alternative access (if available) and/or specifically negotiated with SGP Civil.

How will customers know where to park?

Directional signage will be provided during the construction phase, as well as a construction map indicating where car parks exist.

Significant emphasis will be placed on the parking areas within McKinlay Street and the many existing connecting walkways between this area to Ocean Street, Coral Street and the foreshore.

Will my customers still be able to get to my business?

Pedestrian access will be made available at all times during business opening hours.

On-street car parking within Railway Terrace will be affected. Parking permits for the Esplanade Car Park are available for Railway Terrace businesses, property owners and staff by completing an application form available on the Council website or in hard copy from the SA Whale Centre.

Will there be night works?

No night works are currently planned for this project. If night works become essential, SGP Civil will work closely with Council and those who may be affected, particularly residents, to provide early communication and attempt to minimise potential disruption.



I need disability access to my business or home, how will this be available during the construction phase?

During the construction phase, disabled pedestrian access is planned to be available at all times and/or alternatively, specifically negotiated with SGP Civil. Should this change as the project progresses and works are underway, SGP Civil will work closely with those who may be affected, particularly Railway Terrace traders and residents.

More information?

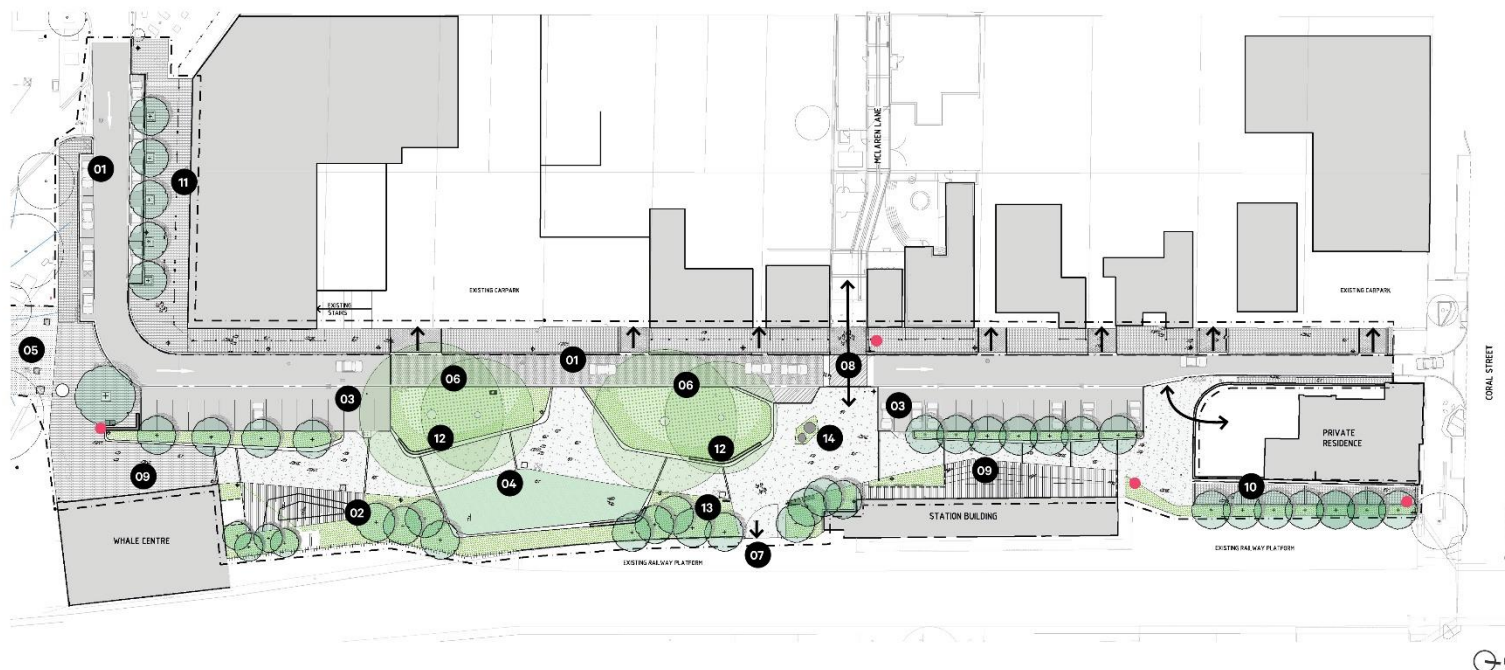
Further details and plans are available from <https://www.victor.sa.gov.au/railwayplaza>

If you have any further questions, please direct them to:

Adam Schrapel
Project Manager
SGP Civil
0467 818 692 or adam.schrapel@sgpcivil.com

Richard Jaunay
Capital Projects Coordinator
City of Victor Harbor
0427 175 309 or rjaunay@victor.sa.gov.au

CONCEPT



KEY MOVES

01	Re-align roadway and parking spaces	05	Stormwater storage tank	09	Improved interface to heritage building	13	Railway Terrace feature sculpture sign
02	Terraced timber deck (viewing platform)	06	Permeable paving to fig tree surrounds	10	Paved walkway connecting to Coral Street	14	Public Art feature piece
03	4 x Accessible carparks	07	Service access gate to platform	11	Widened footpath to building frontage	●	Wayfinding marker location
04	Central lawn / event space	08	Pedestrian connection to McLaren Lane	12	Feature timber seating underneath figs		

KEY ELEMENTS

