

Railway Precinct Victor Harbor

60% DOCUMENTATION



oxygen

CONTENTS

PREVIOUS ENDORSEMENT

REVISIONS

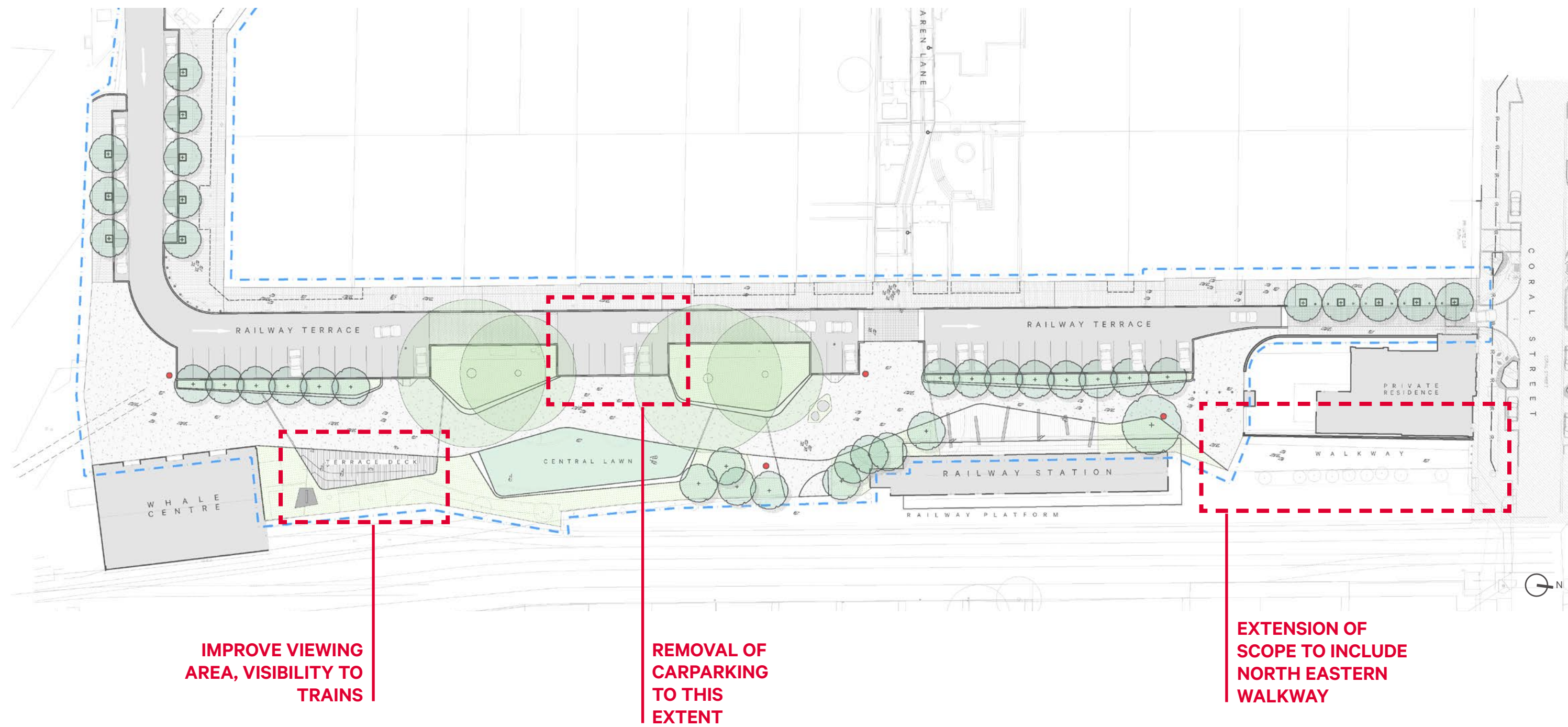
STORMWATER

CHARACTER: MATERIALS + PLANTING

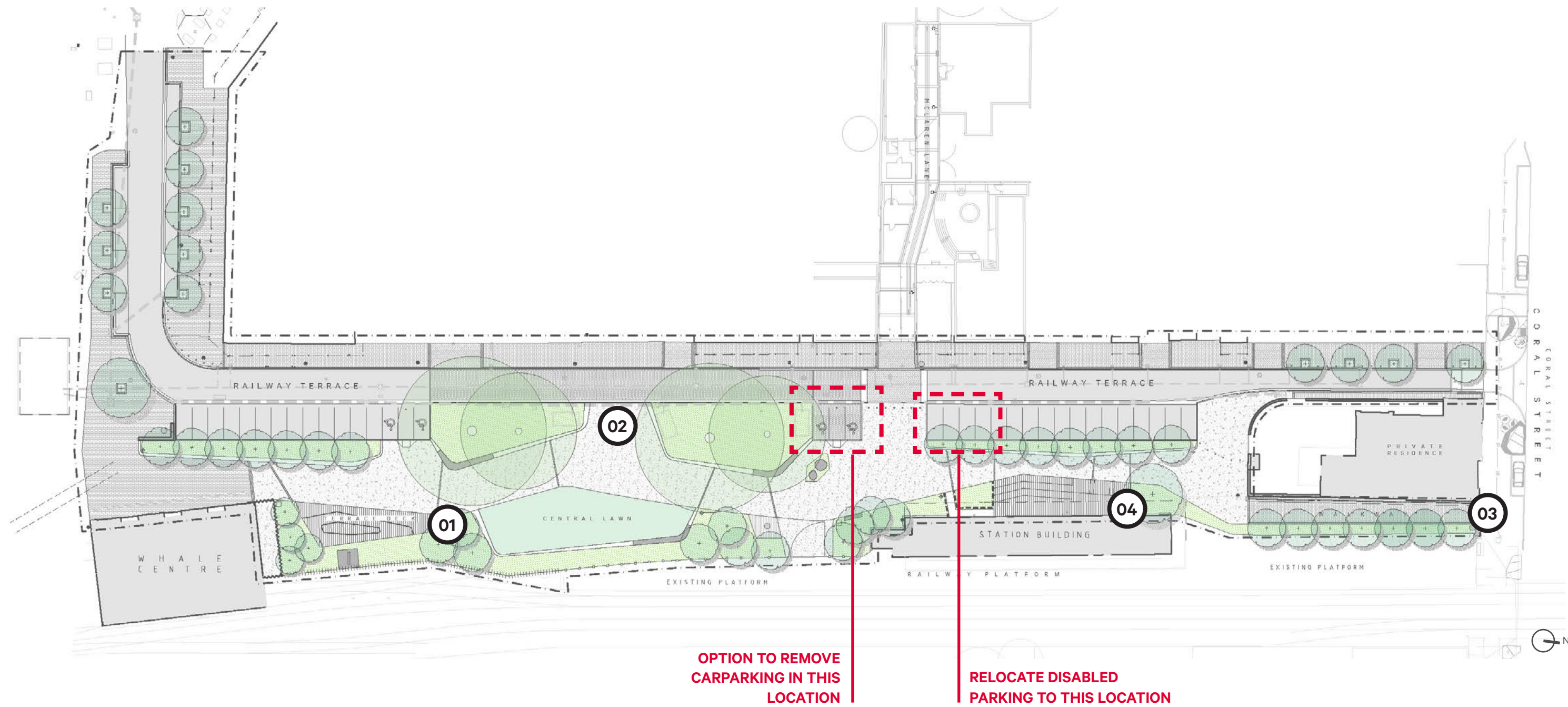
MONTAGES

PREVIOUS ENDORSEMENT

27.05.2019



REVISED PLAN



KEY REVISIONS

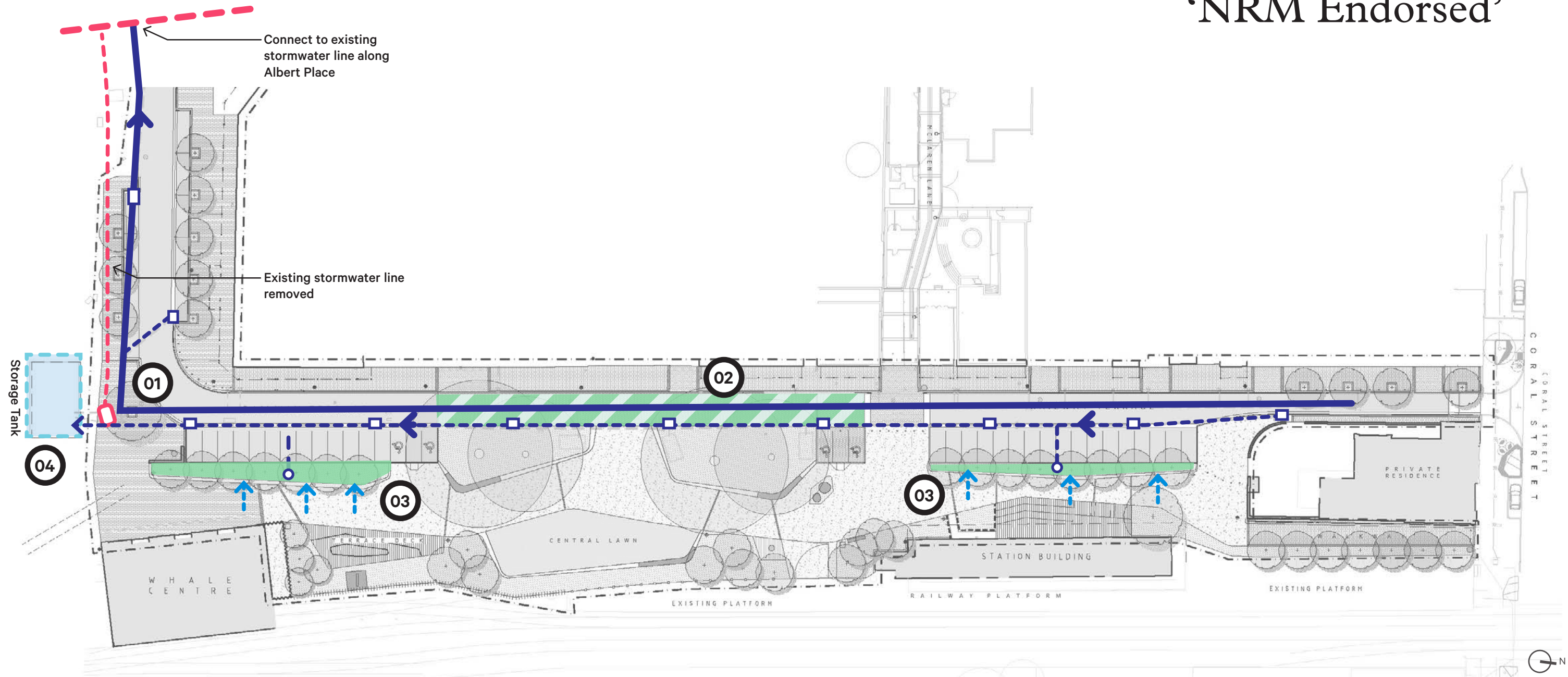
- | | | | |
|----|---------------------------------|----|---|
| 01 | Terraced viewing platform | 03 | Extended scope
Paved walkway and tree planting |
| 02 | Expanded event / function space | 04 | Expanded timber deck to
Railway Station Building |

Approximate draft costings:
\$3.8m to \$4.2m

Costing is indicative and subject to change as
documentation is finalised.

STORM WATER

‘NRM Endorsed’



KEY MOVES

01 Underground Culvert
The underground culvert will continue down the new Railway Terrace road alignment. Filtered and excess stormwater is directed into the culvert and carried into the Albert Place storm water system.

02 Permeable Paving
Trafficable permeable paving will sit adjacent the existing fig trees. This will act as a semi-catchment for drainage of run off storm water. These pavers will also allow soil below to breathe, benefiting fig tree root systems and improving the long term health of the trees.

03 Bio-swales
The rain gardens are integrated within new plantings beds alongside the new roadway and car park alignment. These rain gardens will take a large percentage of run off. This water is filtered and directed to the nearby underground storage tank.

04 Storage Tank
All water filtered through the bio swales is collected and drained toward an underground storage tank in Warland Reserve. This water is then suitable for re-use by Council, for irrigation and similar uses.

CHARACTER: MATERIALS

PAVING + SURFACES



Insitu Concrete
Exposed aggregate insitu concrete with a minimal reveal

Finish: 'Vanilla spice'
Supplier: Premix S.A.



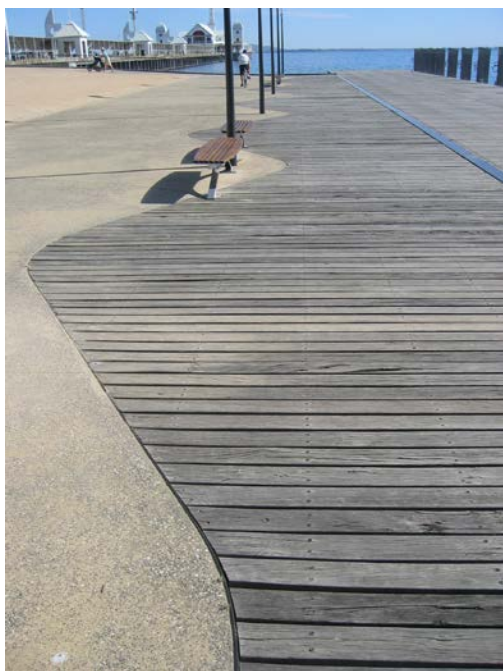
Permeable Pavers
Eco trihex interlocking unit pavers (trafficable)

Finish: Charcoal, honed finish
Supplier: Adbri Masonry



Clay Brick Pavers
Little Hampton unit brick pavers

Finish: 'Mahogany'
Supplier: Little Hampton Bricks



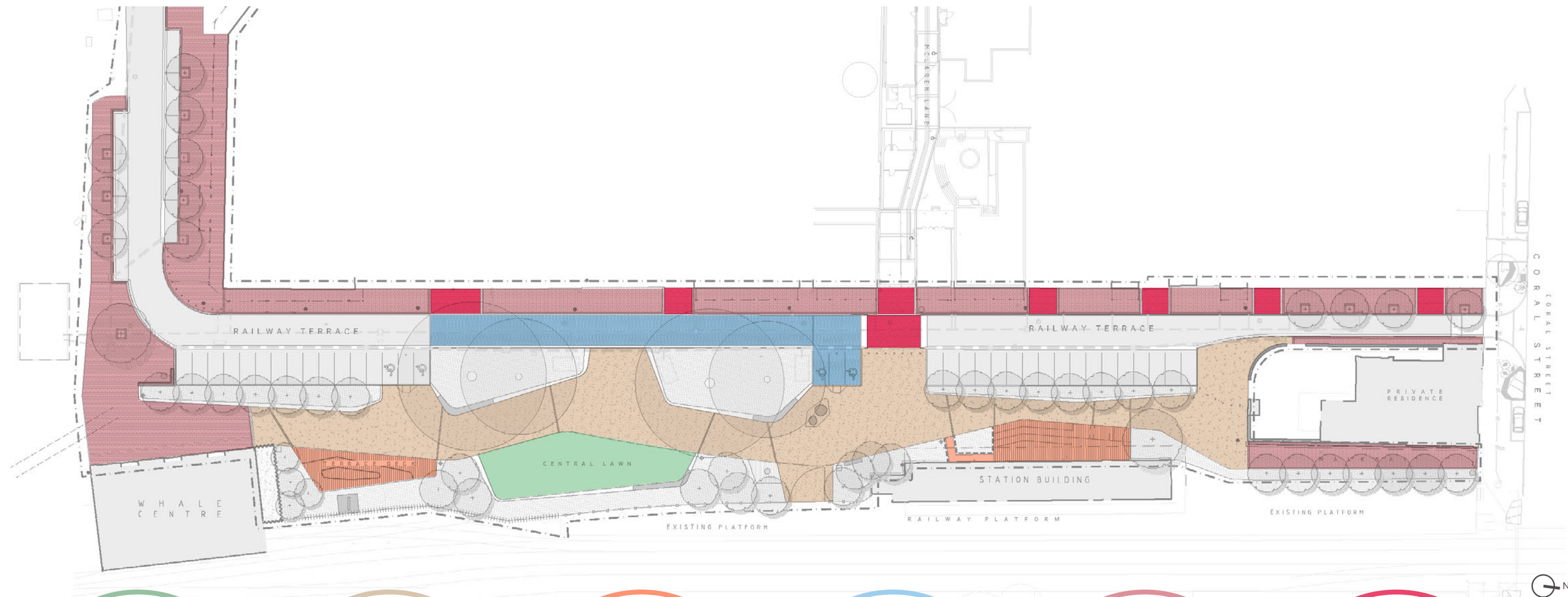
Timber Decking
Class 01 Seasoned, Hardwood Spotted Gum or equivalent

Finish: Cutek CD50 oil
Supplier: Durable Hardwoods

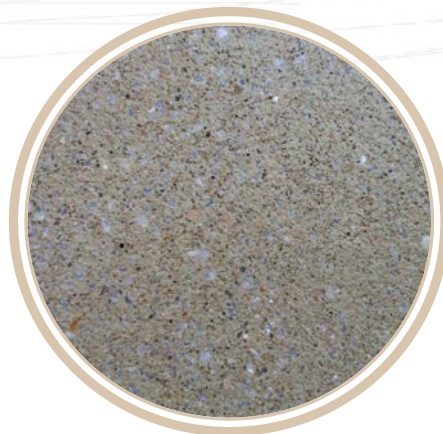


Irrigated Lawn
Kikuyu turf
Instant turf rolls

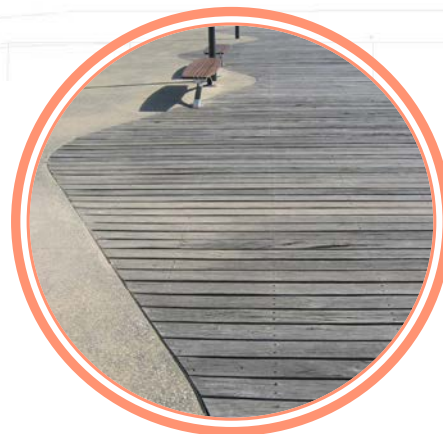
CHARACTER: MATERIALS



Irrigated Turf



Insitu Concrete



Timber Decking



Permeable Pavers



**Clay Pavers
(pedestrian)**



**Clay Pavers
(vehicle)**

CHARACTER: ELEMENTS

KEY ELEMENTS



Feature Seats

- Timber batten seats, Class 01 Seasoned Hardwood
- 2 pack epoxy painted steel legs + arm rests
- Feature lighting, LED strips



Terraces

- Timber terraces with decorative perforated steel vertical panels
- Feature lighting, LED strips



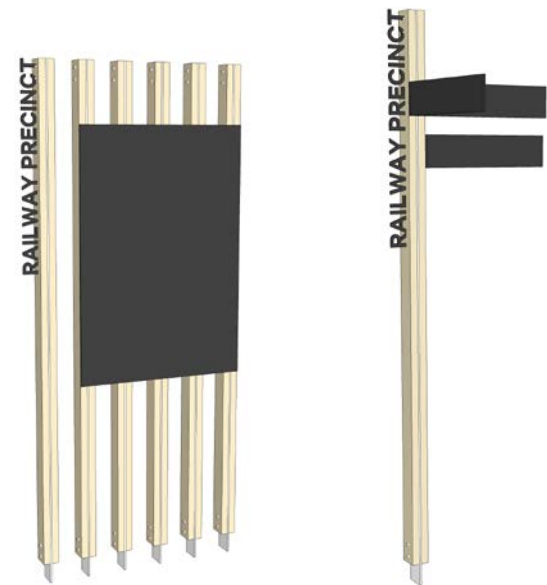
Plaza Pole Top Lights

- Olivio selux
- Colour: Charcoal grey, micaceous



Feature Bollards

- Class 01 Seasoned hardwood posts
- As used in McLaren Lane
- Colour: Charcoal grey, micaceous



Signage / Wayfinding

- Class 01 Seasoned hardwood posts
- 8mm 2 pack epoxy painted steel plates with vinyl text

CHARACTER: PLANTING

TREES



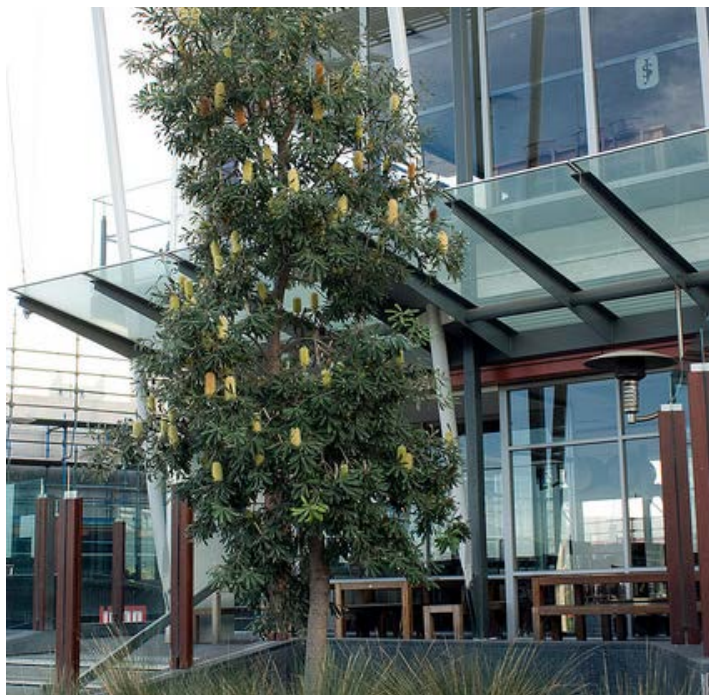
Cupaniopsis anacardioides
Tuckeroo

- Evergreen
- Height: 5-8m
- Span: up to 5m



Gleditsia triacanthos
Golden Honey Locust

- Deciduous
- Height: up to 12m
- Span: 7m



Banksia integrifolia
Coastal Banksia

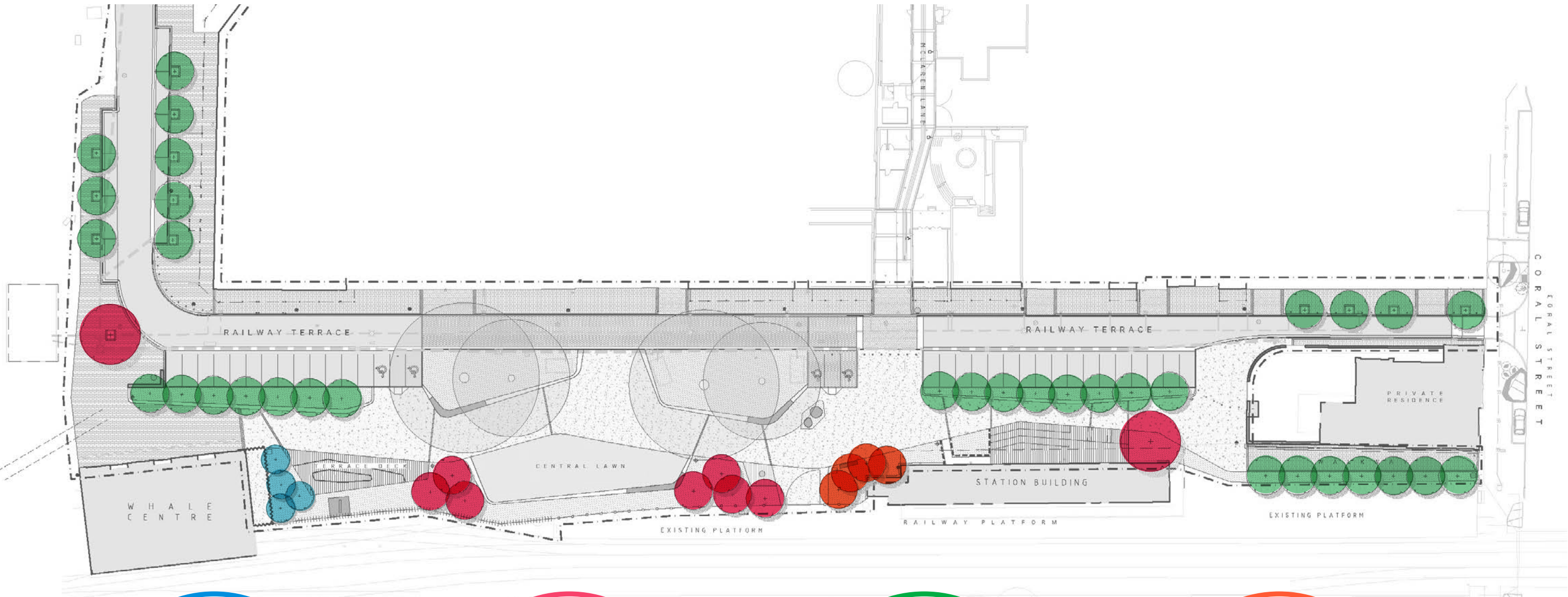
- Evergreen
- Height: up to 14m
- Span: 6m



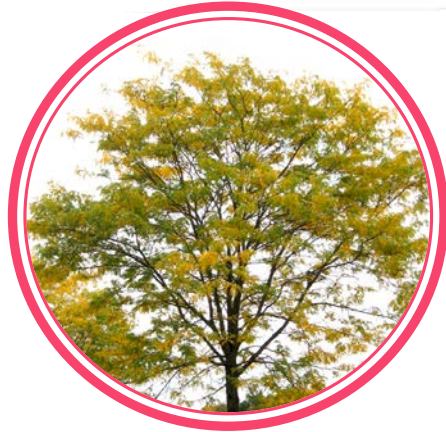
Lagerstroemia indica x L.fauriei 'Natchez'
Crepe Myrtle

- Deciduous
- Height: up to 6m
- Span: 4m

CHARACTER: PLANTING



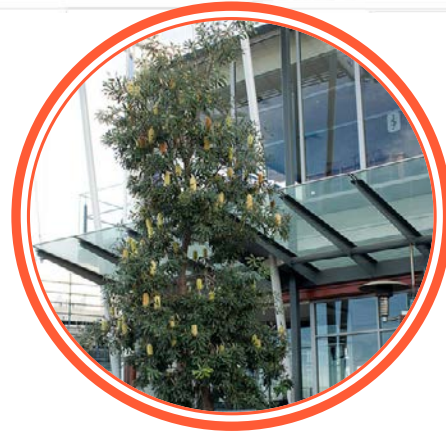
Lagerstroemia indica x L.fauriei 'Natchez'
Crepe Myrtle



Gleditsia triacanthos
Golden Honey Locust



Cupaniopsis anacardioides
Tuckeroo



Banksia integrifolia
Coastal Banksia

CHARACTER: PLANTING

MIX 01 GARDEN BEDS



SPECIES LIST (INDICATIVE)

- Anigozanthos flavidus
- Banksia spinulosa ‘Birthday Candles’
- Chrysocephalum apiculatum
- Correa pulchella ‘Orange Glow’
- Dianella revoluta
- Eleocharis acuta
- Euphorbia martini
- Euphorbia myrsinites
- Grevillea ‘Bronze Rambler’
- Leucophyta brownii
- Olearia axillaris
- Russelia equisetiformis
- Senecio serpens

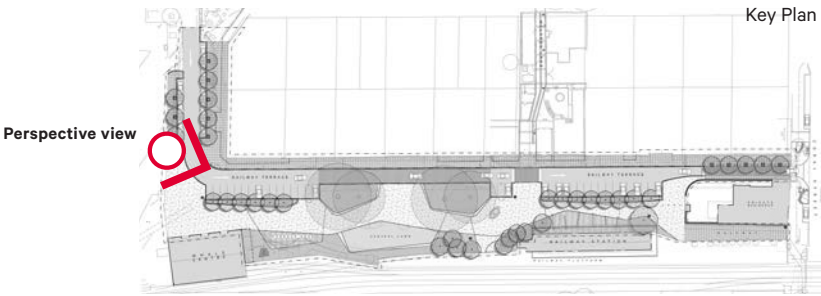
MIX 02 RAIN GARDENS



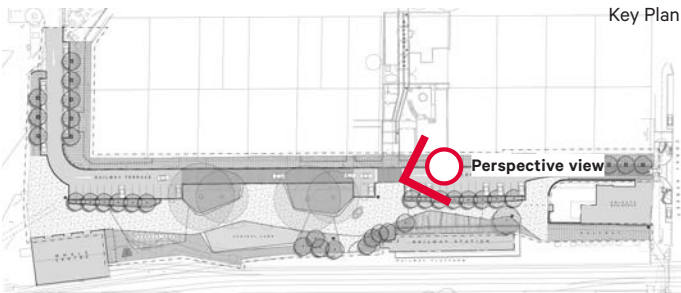
SPECIES LIST (INDICATIVE)

- Bolboschoenus caldwellii
- Ficinia nodosa
- Goodenia ovata
- Juncus kraussii
- Lomandra Evergreen Baby
- Schoenoplectus pungens

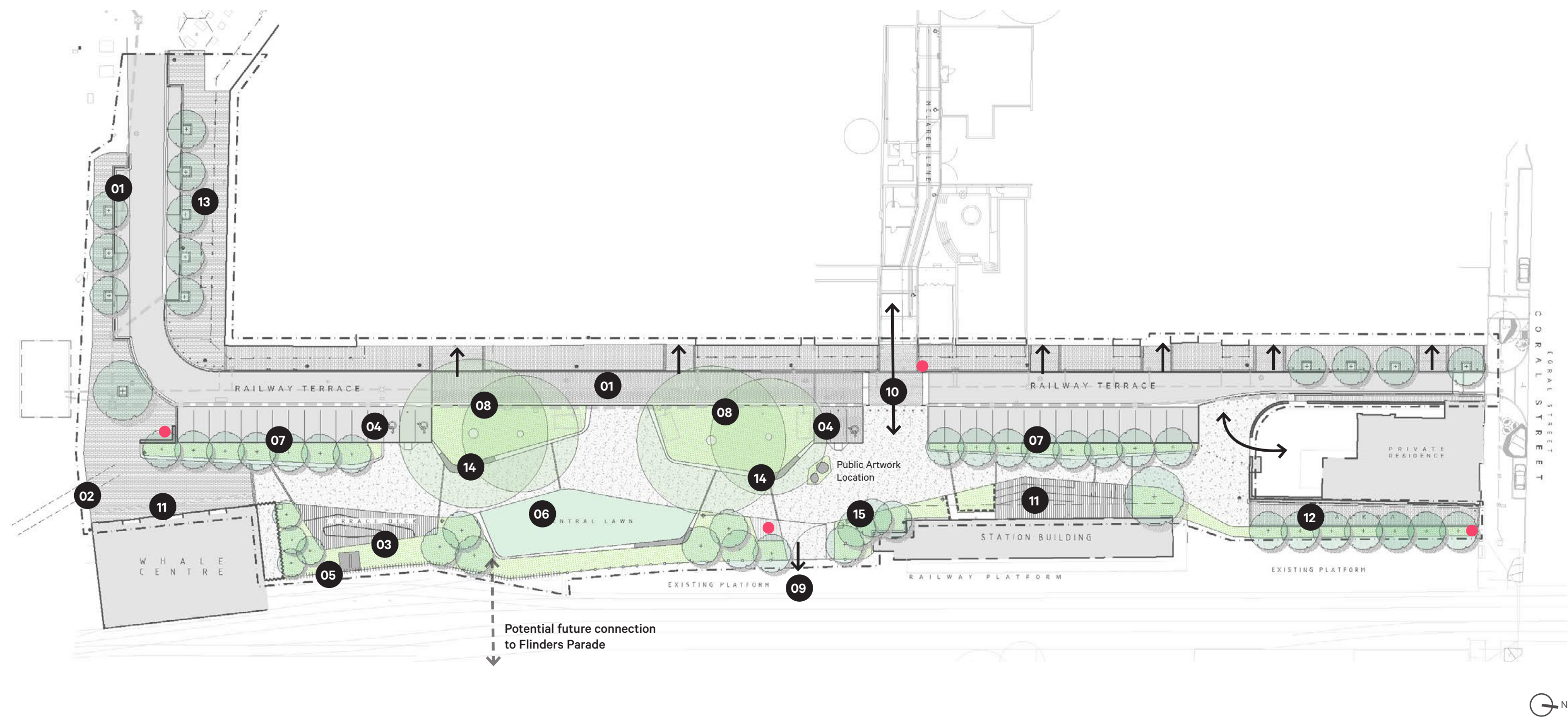
MONTAGE



MONTAGE



PLAN FOR ENDORSEMENT



KEY MOVES

01	Re-align roadway and parking spaces	05	Improve plinth + position of crane	09	Service access gate to platform	13	Widen footpath to building frontage
02	Extend rail tracks from storage shed	06	Central lawn / event space	10	Pedestrian connection to McLaren Lane	14	Feature timber seating underneath figs
03	Terraced timber deck (viewing platform)	07	WSUD techniques to carparking bays	11	Improve interface to heritage building	15	Railway Terrace feature sculpture sign
04	4 x Accessible carparks	08	Permeable paving to fig tree surrounds	12	Paved walkway connecting to Coral Street	●	Wayfinding marker location

oxygen[®]



People, nature and space.

Oxygen Pty Ltd
98-100 Halifax Street
Adelaide SA 5000

T +61 (08) 7324 9600
design@oxygen.net.au
oxygen.net.au