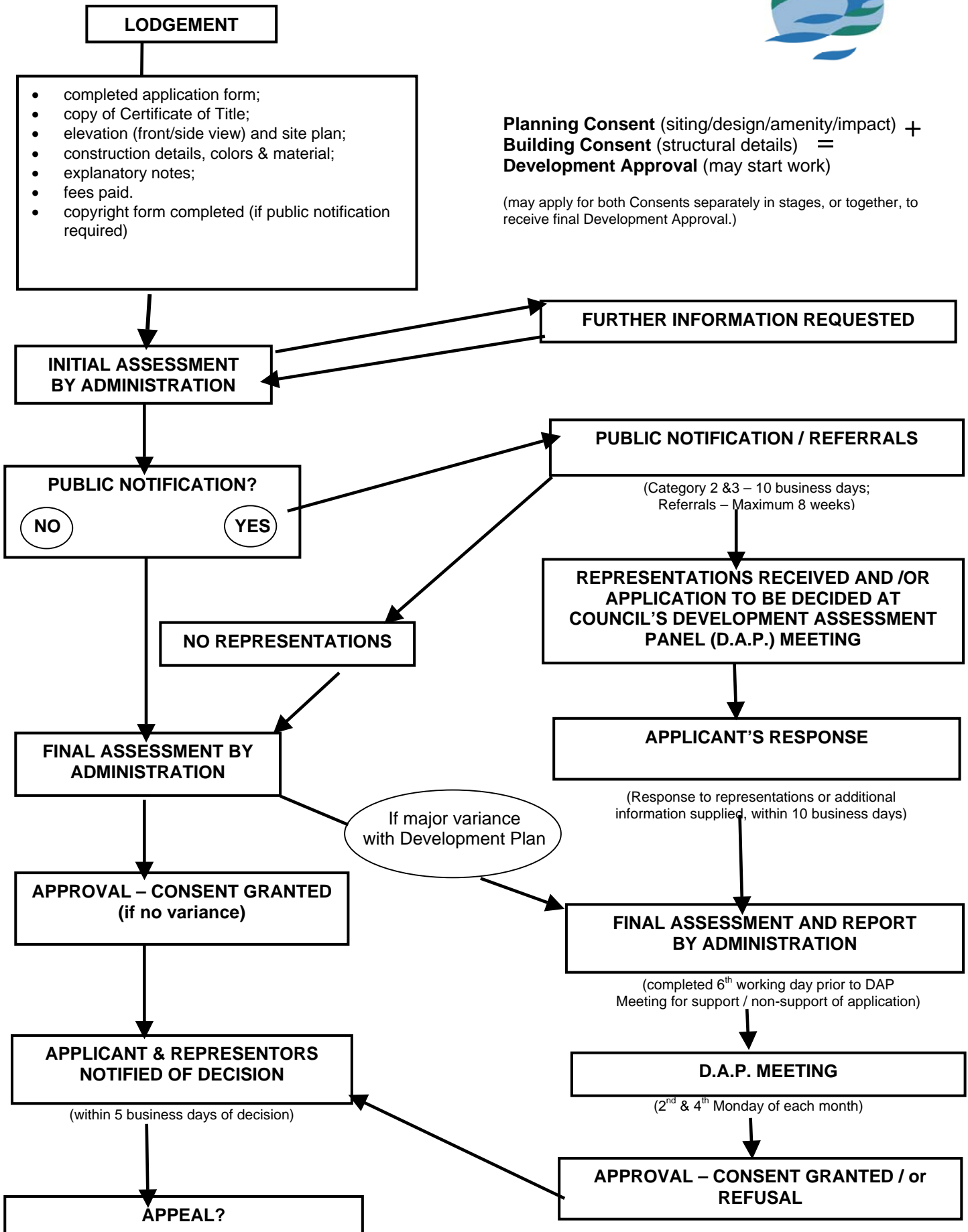


PROCESS FOR ASSESSMENT OF PLANNING APPLICATIONS



Planning Consent (siting/design/amenity/impact) + **Building Consent** (structural details) = **Development Approval** (may start work)

(may apply for both Consents separately in stages, or together, to receive final Development Approval.)

(by applicant against decision or conditions imposed, required within 2 months of decision date; or, by representors against decision if Category 3, within 15 business days of decision date)

NOTE - This flow chart is a simplified indication only and is not relevant for all applications. It is recommended that you seek further advice from council's Planning & Community Services Department if more detailed information is required on ph 8551 0534